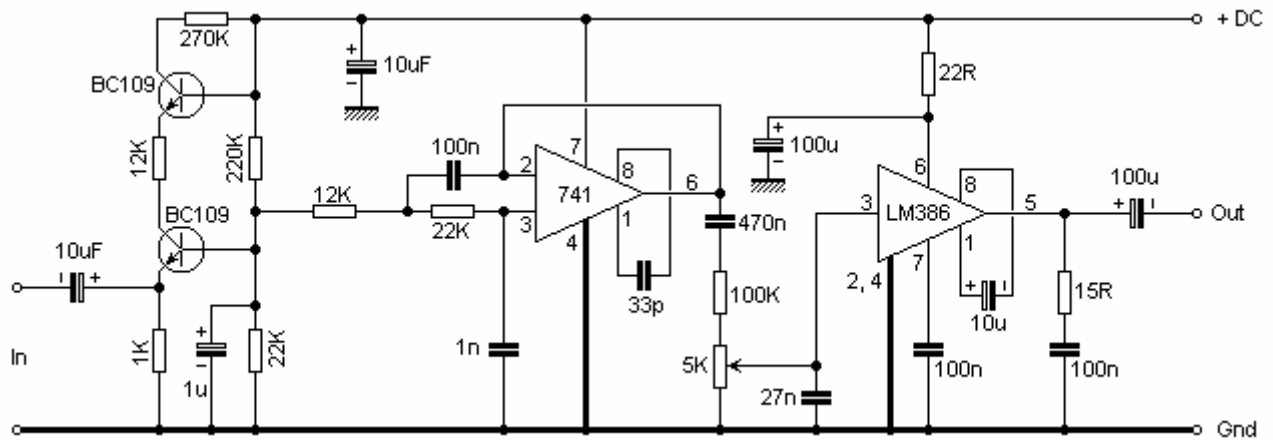


CW Audio Filter



Audio taken from your receiver is fed to the pre-amp which consists of the two BC109 transistors and then passed to the 741 op-amp. This is configured as a Butterworth filter centered around 500Hz.

The filtered audio is now fed into the LM386 power amp which drives a speaker or headphones.

Best Regards... Pete

<http://www.keirle.fsnet.co.uk>