

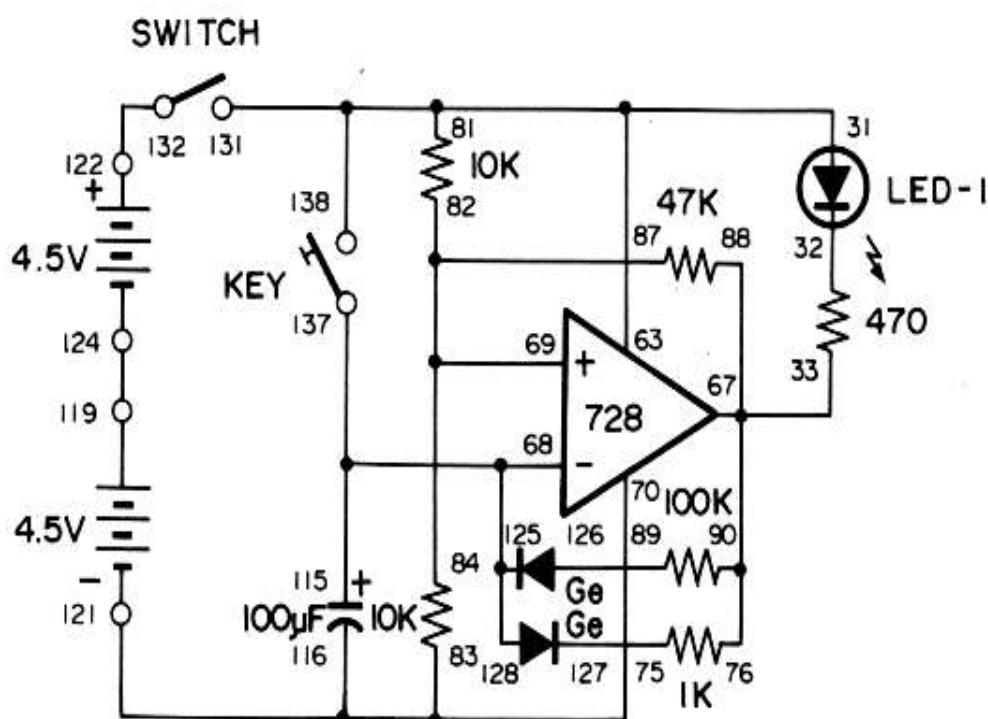
## 90. LED FLASHING LIGHT

The winking LED in the last project stays on and off for about the same amount of time, but we can make it flash on for a very short time.

Start out by sliding the switch to position B and wiring the circuit. This LED flasher uses two diodes. As you build this project, be sure to connect these diodes in the correct direction.

When you finish assembling the project, turn on the power by sliding the switch to position A, and lightly tap the key. The LED starts blinking immediately. Even if you don't press the key, this LED flasher starts flashing shortly after you turn on the power; if you press the key, it begins blinking immediately.

Just like the LED winker in the last project, this LED flasher uses a dual operational amplifier as an astable multivibrator, but its flashing time is much shorter because of the two diodes.



### Wiring Sequence:

81-31-63-131-138, 33-67-88-90-76, 68-115-137-128-125, 69-87-82-84,  
83-70-116-121, 75-127, 89-126, 119-124, 122-132.